



SUNNYSIDE COAL MINE – MONTHLY MONITORING SUMMARY

Site Information

EPL No: 12957

EPA Website Link: <http://www.epa.nsw.gov.au/prpoeoapp/ViewPOEOLicence.aspx?DOCID=32488&SYSUID=1&LICID=12957>

Licensee: Namoi Mining Pty Ltd

Licensee Address: Sunnyside Coal Project, 259 Coocooboona Lane, GUNNEDAH NSW 2380

EPL Monitoring Points: See Figure 1 below

Sampling Period: January 2014

Publication Date: 18th February 2014 (re-published 9th September 2014)

Table 1 - No Pollutant Limits Apply

EPL ID	Pollutant	Units of Measure	Monitoring Frequency	No. of Samples for the Month	Date(s) Sampled	Date Obtained	Min Value	Mean Value	Median Value	Max or Only Value
1	Particulates-Deposited Matter	g/m ² /month	Continuous	1	15/1/2014	21/1/2014	-	-	-	2.4
2	Particulates-Deposited Matter	g/m ² /month	Continuous	1	15/1/2014	21/1/2014	-	-	-	2.7
4	Particulates-Deposited Matter	g/m ² /month	Continuous	1	15/1/2014	21/1/2014	-	-	-	2.7
5	Particulates-Deposited Matter	g/m ² /month	Continuous	1	15/1/2014	21/1/2014	-	-	-	2.9
6	Particulates-Deposited Matter	g/m ² /month	Continuous	1	15/1/2014	21/1/2014	-	-	-	2.2
7	PM ₁₀	µg/m ³	Every 6 days	6	Various	14/2/2014	12.4	21.7	23.7	29.8
9	Conductivity	µs/cm	Special Frequency 1*	0	-	-	-	-	-	-
	Total organic carbon	mg/L		0	-	-	-	-	-	-
10	Conductivity	µs/cm	Special Frequency 1*	0	-	-	-	-	-	-
	Total organic carbon	mg/L		0	-	-	-	-	-	-

SUNNYSIDE COAL MINE – MONTHLY MONITORING SUMMARY

EPL ID	Pollutant	Units of Measure	Monitoring Frequency	No. of Samples for the Month	Date(s) Sampled	Date Obtained	Min Value	Mean Value	Median Value	Max or Only Value
11	TSS	mg/L	Special Frequency 2**	0	-	-	-	-	-	-
	Conductivity	µs/cm		0	-	-	-	-	-	-
	Oil & Grease	mg/L		0	-	-	-	-	-	-
	pH	pH		0	-	-	-	-	-	-
	Total organic carbon	mg/L		0	-	-	-	-	-	-
12	TSS	mg/L	Special Frequency 2**	0	-	-	-	-	-	-
	Conductivity	µs/cm		0	-	-	-	-	-	-
	Oil & Grease	mg/L		0	-	-	-	-	-	-
	pH	pH		0	-	-	-	-	-	-
	Total organic carbon	mg/L		0	-	-	-	-	-	-

* Special Frequency 1 means the collection of samples as soon as practicable after each discharge commences and in any case not more than 12 hours after each discharge commences.

** Special Frequency 2 means collection of samples quarterly (in the event of flow during the quarter) at a time when there is flow and as soon as practicable after each wet weather discharge from points 9 and 10 commences and in any case not more than 12 hours after each discharge commences.

Table 2 - Pollutant Limits Apply

EPL ID	Pollutant	Units of Measure	Monitoring Frequency	No. of Samples for the Month	Date Sampled	Date Obtained	Min Value	Max Value	100%ile Limit	Exceedance (Yes/No)	Comments
9	TSS	mg/L	Special Frequency 1*	0	-	-	-	-	50	-	No discharge
	Oil & Grease	mg/L		0	-	-	-	-	10	-	No discharge
	pH	pH		0	-	-	-	-	6.5-8.5	-	No discharge
10	TSS	mg/L	Special Frequency 1*	0	-	-	-	-	50	-	No discharge
	Oil & Grease	mg/L		0	-	-	-	-	10	-	No discharge
	pH	pH		0	-	-	-	-	6.5-8.5	-	No discharge

SUNNYSIDE COAL MINE – MONTHLY MONITORING SUMMARY

Table 3 – Monitoring (Blasts – Limits Apply)

Location	Parameter	Units of Measure	Frequency	No. of Blasts for the Month	Average Value	Max or Only Value	100%ile Limit	(Potential) Non-compliance/breach
R1	Blast Noise	dB (Lin Peak)	Every Blast	1	-	97.5	120	No
	Blast Vibration	mm/s			-	0.21	10	No
R2	Blast Noise	dB (Lin Peak)	Every Blast	1	-	98.5	120	No
	Blast Vibration	mm/s			-	0.24	10	No
R4	Blast Noise	dB (Lin Peak)	Every Blast	1	-	97.5	120	No
	Blast Vibration	mm/s			-	0.16	10	No
R6	Blast Noise	dB (Lin Peak)	Every Blast	1	-	104.8	120	No
	Blast Vibration	mm/s			-	0.21	10	No



WHITEHAVEN COAL

SUNNYSIDE COAL MINE – MONTHLY MONITORING SUMMARY

Figure 1 – EPL 12957 Monitoring Locations





SUNNYSIDE COAL MINE – MONTHLY MONITORING SUMMARY

Site Information

EPL No: 12957

EPA Website Link: <http://www.epa.nsw.gov.au/prpoeoapp/ViewPOEOLicence.aspx?DOCID=32488&SYSUID=1&LICID=12957>

Licensee: Namoi Mining Pty Ltd

Licensee Address: Sunnyside Coal Project, 259 Coocooboona Lane, GUNNEDAH NSW 2380

EPL Monitoring Points: See Figure 1 below

Sampling Period: February 2014

Publication Date: 14th March 2014 (re-published 9th September 2014)

Table 1 - No Pollutant Limits Apply

EPL ID	Pollutant	Units of Measure	Monitoring Frequency	No. of Samples for the Month	Date(s) Sampled	Date Obtained	Min Value	Mean Value	Median Value	Max or Only Value
1	Particulates-Deposited Matter	g/m ² /month	Continuous	1	14/2/2014	19/2/2014	-	-	-	3.2
2	Particulates-Deposited Matter	g/m ² /month	Continuous	1			-	-	-	1.3
4	Particulates-Deposited Matter	g/m ² /month	Continuous	1			-	-	-	1.7
5	Particulates-Deposited Matter	g/m ² /month	Continuous	1			-	-	-	1.6
6	Particulates-Deposited Matter	g/m ² /month	Continuous	1			-	-	-	4.0
7	PM ₁₀	µg/m ³	Every 6 days	5	Various	11/3/2014	11.2	21.1	19.5	15.3
9	Conductivity	µS/cm	Special Frequency 1*	0	-	-	-	-	-	-
	Total organic carbon	mg/L		0	-	-	-	-	-	-
10	Conductivity	µS/cm	Special Frequency 1*	0	-	-	-	-	-	-
	Total organic carbon	mg/L		0	-	-	-	-	-	-

SUNNYSIDE COAL MINE – MONTHLY MONITORING SUMMARY

EPL ID	Pollutant	Units of Measure	Monitoring Frequency	No. of Samples for the Month	Date(s) Sampled	Date Obtained	Min Value	Mean Value	Median Value	Max or Only Value
11	TSS	mg/L	Special Frequency 2**	0	-	-	-	-	-	-
	Conductivity	µS/cm		0	-	-	-	-	-	-
	Oil & Grease	mg/L		0	-	-	-	-	-	-
	pH	pH		0	-	-	-	-	-	-
	Total organic carbon	mg/L		0	-	-	-	-	-	-
12	TSS	mg/L	Special Frequency 2**	0	-	-	-	-	-	-
	Conductivity	µS/cm		0	-	-	-	-	-	-
	Oil & Grease	mg/L		0	-	-	-	-	-	-
	pH	pH		0	-	-	-	-	-	-
	Total organic carbon	mg/L		0	-	-	-	-	-	-

* Special Frequency 1 means the collection of samples as soon as practicable after each discharge commences and in any case not more than 12 hours after each discharge commences.

** Special Frequency 2 means collection of samples quarterly (in the event of flow during the quarter) at a time when there is flow and as soon as practicable after each wet weather discharge from points 9 and 10 commences and in any case not more than 12 hours after each discharge commences.

Table 2 - Pollutant Limits Apply

EPL ID	Pollutant	Units of Measure	Monitoring Frequency	No. of Samples for the Month	Date Sampled	Date Obtained	Min Value	Max Value	100%ile Limit	Exceedance (Yes/No)	Comments
9	TSS	mg/L	Special Frequency 1*	0	-	-	-	-	50	-	No discharge
	Oil & Grease	mg/L		0	-	-	-	-	10	-	No discharge
	pH	pH		0	-	-	-	-	6.5-8.5	-	No discharge
10	TSS	mg/L	Special Frequency 1*	0	-	-	-	-	50	-	No discharge
	Oil & Grease	mg/L		0	-	-	-	-	10	-	No discharge
	pH	pH		0	-	-	-	-	6.5-8.5	-	No discharge

SUNNYSIDE COAL MINE – MONTHLY MONITORING SUMMARY

Table 3 – Monitoring (Blasts – Limits Apply)

Location	Parameter	Units of Measure	Frequency	No. of Blasts for the Month	Average Value	Max or Only Value	100%ile Limit	(Potential) Non-compliance/breach
R1	Blast Noise	dB (Lin Peak)	Every Blast	2	115.8	126.1	120	Yes
	Blast Vibration	mm/s			0.30	0.36	10	No
R2	Blast Noise	dB (Lin Peak)	Every Blast	2	112.5	118.0	120	Yes
	Blast Vibration	mm/s			0.33	0.35	10	No
R4	Blast Noise	dB (Lin Peak)	Every Blast	2	111.6	112.1	120	No
	Blast Vibration	mm/s			0.15	0.16	10	No
R6	Blast Noise	dB (Lin Peak)	Every Blast	2	117.5	122.8	120	Yes
	Blast Vibration	mm/s			0.22	0.25	10	No



WHITEHAVEN COAL

SUNNYSIDE COAL MINE – MONTHLY MONITORING SUMMARY

Figure 1 – EPL 12957 Monitoring Locations





SUNNYSIDE COAL MINE – MONTHLY MONITORING SUMMARY

Site Information

EPL No: 12957

EPA Website Link: <http://www.epa.nsw.gov.au/prpoeoapp/ViewPOEOLicence.aspx?DOCID=32488&SYSUID=1&LICID=12957>

Licensee: Namoi Mining Pty Ltd

Licensee Address: Sunnyside Coal Project, 259 Coocooboona Lane, GUNNEDAH NSW 2380

EPL Monitoring Points: See Figure 1 below

Sampling Period: March 2014

Publication Date: 23rd April 2014 (re-published 9th September 2014)

Table 1 - No Pollutant Limits Apply

EPL ID	Pollutant	Units of Measure	Monitoring Frequency	No. of Samples for the Month	Date(s) Sampled	Date Obtained	Min Value	Mean Value	Median Value	Max or Only Value
1	Particulates-Deposited Matter	g/m ² /month	Continuous	1	17/3/2014	25/3/2014	-	-	-	1.6
2	Particulates-Deposited Matter	g/m ² /month	Continuous	1	17/3/2014	25/3/2014	-	-	-	2.0
4	Particulates-Deposited Matter	g/m ² /month	Continuous	1	17/3/2014	25/3/2014	-	-	-	2.0
5	Particulates-Deposited Matter	g/m ² /month	Continuous	1	17/3/2014	25/3/2014	-	-	-	7.6
6	Particulates-Deposited Matter	g/m ² /month	Continuous	1	17/3/2014	25/3/2014	-	-	-	1.7
7	PM ₁₀	µg/m ³	Every 6 days	5	Various	15/4/2014	2.7	9.5	8.7	20.4
9	Conductivity	µS/cm	Special Frequency 1*	0	-	-	-	-	-	-
	Total organic carbon	mg/L		0	-	-	-	-	-	-
10	Conductivity	µS/cm	Special Frequency 1*	0	-	-	-	-	-	-
	Total organic carbon	mg/L		0	-	-	-	-	-	-

SUNNYSIDE COAL MINE – MONTHLY MONITORING SUMMARY

EPL ID	Pollutant	Units of Measure	Monitoring Frequency	No. of Samples for the Month	Date(s) Sampled	Date Obtained	Min Value	Mean Value	Median Value	Max or Only Value
11	TSS	mg/L	Special Frequency 2**	0	-	-	-	-	-	-
	Conductivity	µS/cm		0	-	-	-	-	-	-
	Oil & Grease	mg/L		0	-	-	-	-	-	-
	pH	pH		0	-	-	-	-	-	-
	Total organic carbon	mg/L		0	-	-	-	-	-	-
12	TSS	mg/L	Special Frequency 2**	0	-	-	-	-	-	-
	Conductivity	µS/cm		0	-	-	-	-	-	-
	Oil & Grease	mg/L		0	-	-	-	-	-	-
	pH	pH		0	-	-	-	-	-	-
	Total organic carbon	mg/L		0	-	-	-	-	-	-

* Special Frequency 1 means the collection of samples as soon as practicable after each discharge commences and in any case not more than 12 hours after each discharge commences.

** Special Frequency 2 means collection of samples quarterly (in the event of flow during the quarter) at a time when there is flow and as soon as practicable after each wet weather discharge from points 9 and 10 commences and in any case not more than 12 hours after each discharge commences.

Table 2 - Pollutant Limits Apply

EPL ID	Pollutant	Units of Measure	Monitoring Frequency	No. of Samples for the Month	Date Sampled	Date Obtained	Min Value	Max Value	100%ile Limit	Exceedance (Yes/No)	Comments
9	TSS	mg/L	Special Frequency 1*	0	-	-	-	-	50	-	No discharge
	Oil & Grease	mg/L		0	-	-	-	-	10	-	No discharge
	pH	pH		0	-	-	-	-	6.5-8.5	-	No discharge
10	TSS	mg/L	Special Frequency 1*	0	-	-	-	-	50	-	No discharge
	Oil & Grease	mg/L		0	-	-	-	-	10	-	No discharge
	pH	pH		0	-	-	-	-	6.5-8.5	-	No discharge

SUNNYSIDE COAL MINE – MONTHLY MONITORING SUMMARY

Table 3 – Monitoring (Blasts – Limits Apply)

Location	Parameter	Units of Measure	Frequency	No. of Blasts for the Month	Average Value	Max or Only Value	100%ile Limit	(Potential) Non-compliance/breach
R1	Blast Noise	dB (Lin Peak)	Every Blast	1	-	100.8	120	No
	Blast Vibration	mm/s			-	0.14	10	No
R2	Blast Noise	dB (Lin Peak)	Every Blast	1	-	98.0	120	No
	Blast Vibration	mm/s			-	0.14	10	No
R4	Blast Noise	dB (Lin Peak)	Every Blast	1	-	101.5	120	No
	Blast Vibration	mm/s			-	0.09	10	No
R6	Blast Noise	dB (Lin Peak)	Every Blast	1	-	109.4	120	No
	Blast Vibration	mm/s			-	0.17	10	No



WHITEHAVEN COAL

SUNNYSIDE COAL MINE – MONTHLY MONITORING SUMMARY

Figure 1 – EPL 12957 Monitoring Locations





SUNNYSIDE COAL MINE – MONTHLY MONITORING SUMMARY

Site Information

EPL No: 12957

EPA Website Link: <http://www.epa.nsw.gov.au/prpoeoapp/ViewPOEOLicence.aspx?DOCID=32488&SYSUID=1&LICID=12957>

Licensee: Namoi Mining Pty Ltd

Licensee Address: Sunnyside Coal Project, 259 Coocooboonah Lane, GUNNEDAH NSW 2380

EPL Monitoring Points: See Figure 1 below

Sampling Period: April 2014

Publication Date: 22nd May 2014 (re-published 9th September 2014)

Table 1 - No Pollutant Limits Apply

EPL ID	Pollutant	Units of Measure	Monitoring Frequency	No. of Samples for the Month	Date(s) Sampled	Date Obtained	Min Value	Mean Value	Median Value	Max or Only Value
1	Particulates-Deposited Matter	g/m ² /month	Continuous	1	16/04/2014	30/04/2014	-	-	-	0.3
2	Particulates-Deposited Matter	g/m ² /month	Continuous	1	16/04/2014	30/04/2014	-	-	-	0.5
4	Particulates-Deposited Matter	g/m ² /month	Continuous	1	16/04/2014	30/04/2014	-	-	-	4.7
5	Particulates-Deposited Matter	g/m ² /month	Continuous	1	16/04/2014	30/04/2014	-	-	-	0.6
6	Particulates-Deposited Matter	g/m ² /month	Continuous	1	16/04/2014	30/04/2014	-	-	-	0.8
7	PM ₁₀	µg/m ³	Every 6 days	5	Various	14/05/2014	6.1	14.2	11.4	28.6
9	Conductivity	µS/cm	Special Frequency 1*	0	-	-	-	-	-	-
	Total organic carbon	mg/L		0	-	-	-	-	-	-
10	Conductivity	µS/cm	Special Frequency 1*	0	-	-	-	-	-	-
	Total organic carbon	mg/L		0	-	-	-	-	-	-

SUNNYSIDE COAL MINE – MONTHLY MONITORING SUMMARY

EPL ID	Pollutant	Units of Measure	Monitoring Frequency	No. of Samples for the Month	Date(s) Sampled	Date Obtained	Min Value	Mean Value	Median Value	Max or Only Value
11	TSS	mg/L	Special Frequency 2**	0	-	-	-	-	-	-
	Conductivity	µS/cm		0	-	-	-	-	-	-
	Oil & Grease	mg/L		0	-	-	-	-	-	-
	pH	pH		0	-	-	-	-	-	-
	Total organic carbon	mg/L		0	-	-	-	-	-	-
12	TSS	mg/L	Special Frequency 2**	0	-	-	-	-	-	-
	Conductivity	µS/cm		0	-	-	-	-	-	-
	Oil & Grease	mg/L		0	-	-	-	-	-	-
	pH	pH		0	-	-	-	-	-	-
	Total organic carbon	mg/L		0	-	-	-	-	-	-

* Special Frequency 1 means the collection of samples as soon as practicable after each discharge commences and in any case not more than 12 hours after each discharge commences.

** Special Frequency 2 means collection of samples quarterly (in the event of flow during the quarter) at a time when there is flow and as soon as practicable after each wet weather discharge from points 9 and 10 commences and in any case not more than 12 hours after each discharge commences.

Table 2 - Pollutant Limits Apply

EPL ID	Pollutant	Units of Measure	Monitoring Frequency	No. of Samples for the Month	Date Sampled	Date Obtained	Min Value	Max Value	100%ile Limit	Exceedance (Yes/No)	Comments
9	TSS	mg/L	Special Frequency 1*	0	-	-	-	-	50	-	No discharge
	Oil & Grease	mg/L		0	-	-	-	-	10	-	No discharge
	pH	pH		0	-	-	-	-	6.5-8.5	-	No discharge
10	TSS	mg/L	Special Frequency 1*	0	-	-	-	-	50	-	No discharge
	Oil & Grease	mg/L		0	-	-	-	-	10	-	No discharge
	pH	pH		0	-	-	-	-	6.5-8.5	-	No discharge

SUNNYSIDE COAL MINE – MONTHLY MONITORING SUMMARY

Table 3 – Monitoring (Blasts – Limits Apply)

Location	Parameter	Units of Measure	Frequency	No. of Blasts for the Month	Average Value	Max or Only Value	100%ile Limit	(Potential) Non-compliance/breach
R1	Blast Noise	dB (Lin Peak)	Every Blast	0	-	-	-	-
	Blast Vibration	mm/s			-	-	-	-
R2	Blast Noise	dB (Lin Peak)	Every Blast	0	-	-	-	-
	Blast Vibration	mm/s			-	-	-	-
R4	Blast Noise	dB (Lin Peak)	Every Blast	0	-	-	-	-
	Blast Vibration	mm/s			-	-	-	-
R6	Blast Noise	dB (Lin Peak)	Every Blast	0	-	-	-	-
	Blast Vibration	mm/s			-	-	-	-



WHITEHAVEN COAL

SUNNYSIDE COAL MINE – MONTHLY MONITORING SUMMARY

Figure 1 – EPL 12957 Monitoring Locations





SUNNYSIDE COAL MINE – MONTHLY MONITORING SUMMARY

Site Information

EPL No: 12957

EPA Website Link: <http://www.epa.nsw.gov.au/prpoeoapp/ViewPOEOLicence.aspx?DOCID=32488&SYSUID=1&LICID=12957>

Licensee: Namoi Mining Pty Ltd

Licensee Address: Sunnyside Coal Project, 259 Coocooboonah Lane, GUNNEDAH NSW 2380

EPL Monitoring Points: See Figure 1 below

Sampling Period: May 2014

Publication Date: 17th June 2014 (re-published 9th September 2014)

Table 1 - No Pollutant Limits Apply

EPL ID	Pollutant	Units of Measure	Monitoring Frequency	No. of Samples for the Month	Date(s) Sampled	Date Obtained	Min Value	Mean Value	Median Value	Max or Only Value
1	Particulates-Deposited Matter	g/m ² /month	Continuous	1	16/05/14	27/05/14	-	-	-	0.7
2	Particulates-Deposited Matter	g/m ² /month	Continuous	1	16/05/14	27/05/14	-	-	-	0.7
4	Particulates-Deposited Matter	g/m ² /month	Continuous	1	16/05/14	27/05/14	-	-	-	4
5	Particulates-Deposited Matter	g/m ² /month	Continuous	1	16/05/14	27/05/14	-	-	-	0.6
6	Particulates-Deposited Matter	g/m ² /month	Continuous	1	16/05/14	27/05/14	-	-	-	1
7	PM ₁₀	µg/m ³	Every 6 days	5	Various	13/06/14	2.8	8.6	8.6	13.2
9	Conductivity	µS/cm	Special Frequency 1*	0	-	-	-	-	-	-
	Total organic carbon	mg/L		0	-	-	-	-	-	-
10	Conductivity	µS/cm	Special Frequency 1*	0	-	-	-	-	-	-
	Total organic carbon	mg/L		0	-	-	-	-	-	-

SUNNYSIDE COAL MINE – MONTHLY MONITORING SUMMARY

EPL ID	Pollutant	Units of Measure	Monitoring Frequency	No. of Samples for the Month	Date(s) Sampled	Date Obtained	Min Value	Mean Value	Median Value	Max or Only Value
11	TSS	mg/L	Special Frequency 2**	0	-	-	-	-	-	-
	Conductivity	µS/cm		0	-	-	-	-	-	-
	Oil & Grease	mg/L		0	-	-	-	-	-	-
	pH	pH		0	-	-	-	-	-	-
	Total organic carbon	mg/L		0	-	-	-	-	-	-
12	TSS	mg/L	Special Frequency 2**	0	-	-	-	-	-	-
	Conductivity	µS/cm		0	-	-	-	-	-	-
	Oil & Grease	mg/L		0	-	-	-	-	-	-
	pH	pH		0	-	-	-	-	-	-
	Total organic carbon	mg/L		0	-	-	-	-	-	-

* Special Frequency 1 means the collection of samples as soon as practicable after each discharge commences and in any case not more than 12 hours after each discharge commences.

** Special Frequency 2 means collection of samples quarterly (in the event of flow during the quarter) at a time when there is flow and as soon as practicable after each wet weather discharge from points 9 and 10 commences and in any case not more than 12 hours after each discharge commences.

Table 2 - Pollutant Limits Apply

EPL ID	Pollutant	Units of Measure	Monitoring Frequency	No. of Samples for the Month	Date Sampled	Date Obtained	Min Value	Max Value	100%ile Limit	Exceedance (Yes/No)	Comments
9	TSS	mg/L	Special Frequency 1*	0	-	-	-	-	50	-	No discharge
	Oil & Grease	mg/L		0	-	-	-	-	10	-	No discharge
	pH	pH		0	-	-	-	-	6.5-8.5	-	No discharge
10	TSS	mg/L	Special Frequency 1*	0	-	-	-	-	50	-	No discharge
	Oil & Grease	mg/L		0	-	-	-	-	10	-	No discharge
	pH	pH		0	-	-	-	-	6.5-8.5	-	No discharge

SUNNYSIDE COAL MINE – MONTHLY MONITORING SUMMARY

Table 3 – Monitoring (Blasts – Limits Apply)

Location	Parameter	Units of Measure	Frequency	No. of Blasts for the Month	Average Value	Max or Only Value	100%ile Limit	(Potential) Non-compliance/breach
R1	Blast Noise	dB (Lin Peak)	Every Blast	0	-	-	-	-
	Blast Vibration	mm/s			-	-	-	-
R2	Blast Noise	dB (Lin Peak)	Every Blast	0	-	-	-	-
	Blast Vibration	mm/s			-	-	-	-
R4	Blast Noise	dB (Lin Peak)	Every Blast	0	-	-	-	-
	Blast Vibration	mm/s			-	-	-	-
R6	Blast Noise	dB (Lin Peak)	Every Blast	0	-	-	-	-
	Blast Vibration	mm/s			-	-	-	-



WHITEHAVEN COAL

SUNNYSIDE COAL MINE – MONTHLY MONITORING SUMMARY

Figure 1 – EPL 12957 Monitoring Locations





SUNNYSIDE COAL MINE – MONTHLY MONITORING SUMMARY

Site Information

EPL No: 12957

EPA Website Link: <http://www.epa.nsw.gov.au/prpoeoapp/ViewPOEOLicence.aspx?DOCID=32488&SYSUID=1&LICID=12957>

Licensee: Namoi Mining Pty Ltd

Licensee Address: Sunnyside Coal Project, 259 Coocooboona Lane, GUNNEDAH NSW 2380

EPL Monitoring Points: See Figure 1 below

Sampling Period: June 2014

Publication Date: 9th September 2014

Table 1 - No Pollutant Limits Apply

EPL ID	Pollutant	Units of Measure	Monitoring Frequency	No. of Samples for the Month	Date(s) Sampled	Date Obtained	Min Value	Mean Value	Median Value	Max or Only Value
1	Particulates-Deposited Matter	g/m ² /month	Continuous	1	16/06/2014	26/06/2014	-	-	-	0.1
2	Particulates-Deposited Matter	g/m ² /month	Continuous	1	16/06/2014	26/06/2014	-	-	-	0.3
4	Particulates-Deposited Matter	g/m ² /month	Continuous	1	16/06/2014	26/06/2014	-	-	-	4.5
5	Particulates-Deposited Matter	g/m ² /month	Continuous	1	16/06/2014	26/06/2014	-	-	-	<0.1
6	Particulates-Deposited Matter	g/m ² /month	Continuous	1	16/06/2014	26/06/2014	-	-	-	1.3
7	PM ₁₀	µg/m ³	Every 6 days	5	Various	08/07/2014	1.6	5.34	4.6	9.5
9	Conductivity	µS/cm	Special Frequency 1*	0	-	-	-	-	-	-
	Total organic carbon	mg/L		0	-	-	-	-	-	-
10	Conductivity	µS/cm	Special Frequency 1*	0	-	-	-	-	-	-
	Total organic carbon	mg/L		0	-	-	-	-	-	-

SUNNYSIDE COAL MINE – MONTHLY MONITORING SUMMARY

EPL ID	Pollutant	Units of Measure	Monitoring Frequency	No. of Samples for the Month	Date(s) Sampled	Date Obtained	Min Value	Mean Value	Median Value	Max or Only Value
11	TSS	mg/L	Special Frequency 2**	0	-	-	-	-	-	-
	Conductivity	µS/cm		0	-	-	-	-	-	-
	Oil & Grease	mg/L		0	-	-	-	-	-	-
	pH	pH		0	-	-	-	-	-	-
	Total organic carbon	mg/L		0	-	-	-	-	-	-
12	TSS	mg/L	Special Frequency 2**	0	-	-	-	-	-	-
	Conductivity	µS /cm		0	-	-	-	-	-	-
	Oil & Grease	mg/L		0	-	-	-	-	-	-
	pH	pH		0	-	-	-	-	-	-
	Total organic carbon	mg/L		0	-	-	-	-	-	-

* Special Frequency 1 means the collection of samples as soon as practicable after each discharge commences and in any case not more than 12 hours after each discharge commences.

** Special Frequency 2 means collection of samples quarterly (in the event of flow during the quarter) at a time when there is flow and as soon as practicable after each wet weather discharge from points 9 and 10 commences and in any case not more than 12 hours after each discharge commences.

Table 2 - Pollutant Limits Apply

EPL ID	Pollutant	Units of Measure	Monitoring Frequency	No. of Samples for the Month	Date Sampled	Date Obtained	Min Value	Max Value	100%ile Limit	Exceedance (Yes/No)	Comments
9	TSS	mg/L	Special Frequency 1*	0	-	-	-	-	50	-	No discharge
	Oil & Grease	mg/L		0	-	-	-	-	10	-	No discharge
	pH	pH		0	-	-	-	-	6.5-8.5	-	No discharge
10	TSS	mg/L	Special Frequency 1*	0	-	-	-	-	50	-	No discharge
	Oil & Grease	mg/L		0	-	-	-	-	10	-	No discharge
	pH	pH		0	-	-	-	-	6.5-8.5	-	No discharge

SUNNYSIDE COAL MINE – MONTHLY MONITORING SUMMARY

Table 3 – Monitoring (Blasts – Limits Apply)

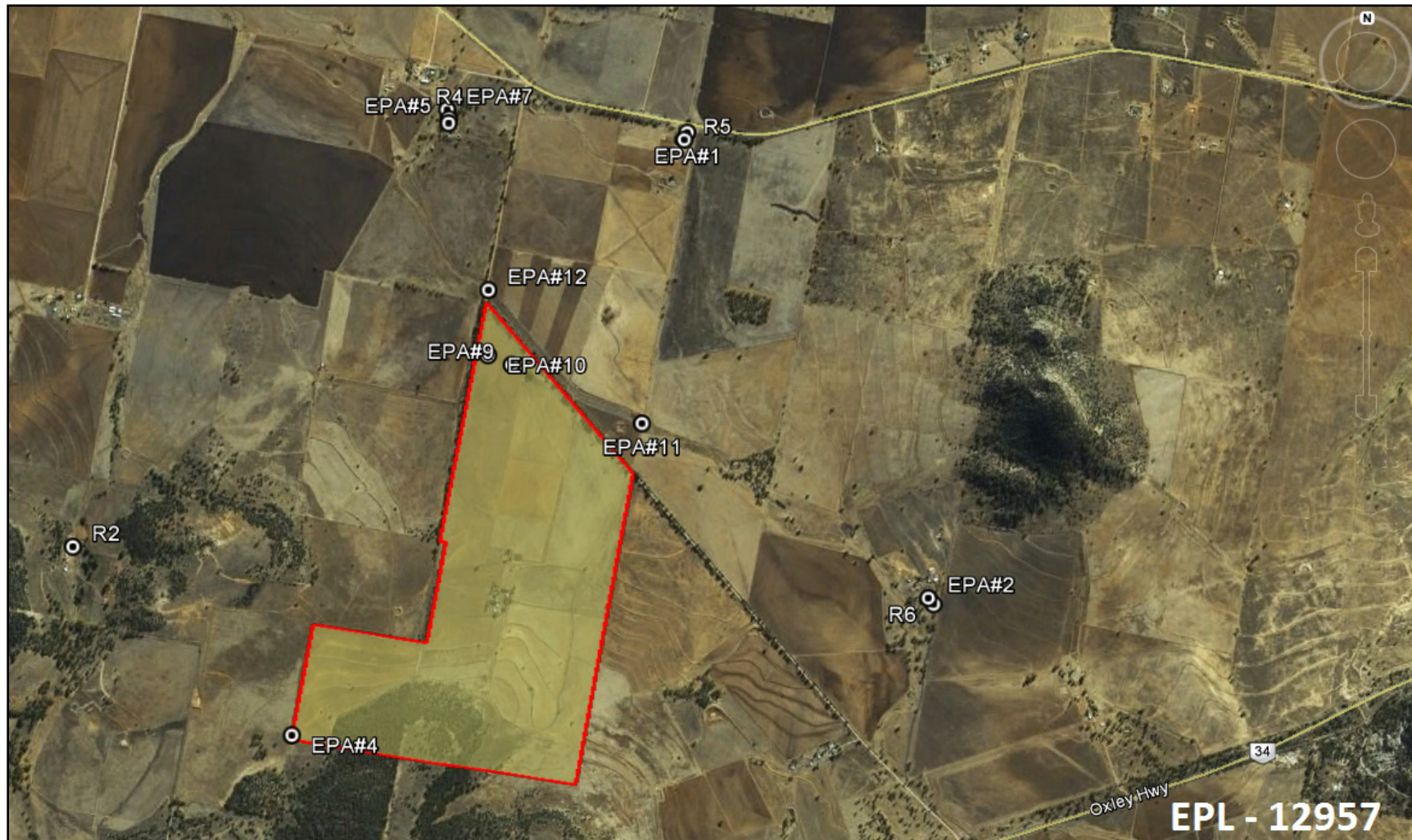
Location	Parameter	Units of Measure	Frequency	No. of Blasts for the Month	Average Value	Max or Only Value	100%ile Limit	(Potential) Non-compliance/breach
R1	Blast Noise	dB (Lin Peak)	Every Blast	0	-	-	-	-
	Blast Vibration	mm/s			-	-	-	-
R2	Blast Noise	dB (Lin Peak)	Every Blast	0	-	-	-	-
	Blast Vibration	mm/s			-	-	-	-
R4	Blast Noise	dB (Lin Peak)	Every Blast	0	-	-	-	-
	Blast Vibration	mm/s			-	-	-	-
R6	Blast Noise	dB (Lin Peak)	Every Blast	0	-	-	-	-
	Blast Vibration	mm/s			-	-	-	-



WHITEHAVEN COAL

SUNNYSIDE COAL MINE – MONTHLY MONITORING SUMMARY

Figure 1 – EPL 12957 Monitoring Locations





SUNNYSIDE COAL MINE – MONTHLY MONITORING SUMMARY

Site Information

EPL No: 12957

EPA Website Link: <http://www.epa.nsw.gov.au/prpoeoapp/ViewPOEOLicence.aspx?DOCID=32488&SYSUID=1&LICID=12957>

Licensee: Namoi Mining Pty Ltd

Licensee Address: Sunnyside Coal Project, 259 Coocooboona Lane, GUNNEDAH NSW 2380

EPL Monitoring Points: See Figure 1 below

Sampling Period: July 2014

Publication Date: 9th September 2014

Table 1 - No Pollutant Limits Apply

EPL ID	Pollutant	Units of Measure	Monitoring Frequency	No. of Samples for the Month	Date(s) Sampled	Date Obtained	Min Value	Mean Value	Median Value	Max or Only Value
1	Particulates-Deposited Matter	g/m ² /month	Continuous	1	15/07/2014	21/07/2014	-	-	-	1.1
2	Particulates-Deposited Matter	g/m ² /month	Continuous	1	15/07/2014	21/07/2014	-	-	-	0.4
4	Particulates-Deposited Matter	g/m ² /month	Continuous	1	15/07/2014	21/07/2014	-	-	-	0.4
5	Particulates-Deposited Matter	g/m ² /month	Continuous	1	15/07/2014	21/07/2014	-	-	-	<0.1
6	Particulates-Deposited Matter	g/m ² /month	Continuous	1	15/07/2014	21/07/2014	-	-	-	0.5
7	PM ₁₀	µg/m ³	Every 6 days	5	Various	08/08/2014	2.0	10.5	13.8	17.7
9	Conductivity	µS/cm	Special Frequency 1*	0	-	-	-	-	-	-
	Total organic carbon	mg/L		0	-	-	-	-	-	-
10	Conductivity	µS/cm	Special Frequency 1*	0	-	-	-	-	-	-
	Total organic carbon	mg/L		0	-	-	-	-	-	-

SUNNYSIDE COAL MINE – MONTHLY MONITORING SUMMARY

EPL ID	Pollutant	Units of Measure	Monitoring Frequency	No. of Samples for the Month	Date(s) Sampled	Date Obtained	Min Value	Mean Value	Median Value	Max or Only Value
11	TSS	mg/L	Special Frequency 2**	0	-	-	-	-	-	-
	Conductivity	µS/cm		0	-	-	-	-	-	-
	Oil & Grease	mg/L		0	-	-	-	-	-	-
	pH	pH		0	-	-	-	-	-	-
	Total organic carbon	mg/L		0	-	-	-	-	-	-
12	TSS	mg/L	Special Frequency 2**	0	-	-	-	-	-	-
	Conductivity	µS /cm		0	-	-	-	-	-	-
	Oil & Grease	mg/L		0	-	-	-	-	-	-
	pH	pH		0	-	-	-	-	-	-
	Total organic carbon	mg/L		0	-	-	-	-	-	-

* Special Frequency 1 means the collection of samples as soon as practicable after each discharge commences and in any case not more than 12 hours after each discharge commences.

** Special Frequency 2 means collection of samples quarterly (in the event of flow during the quarter) at a time when there is flow and as soon as practicable after each wet weather discharge from points 9 and 10 commences and in any case not more than 12 hours after each discharge commences.

Table 2 - Pollutant Limits Apply

EPL ID	Pollutant	Units of Measure	Monitoring Frequency	No. of Samples for the Month	Date Sampled	Date Obtained	Min Value	Max Value	100%ile Limit	Exceedance (Yes/No)	Comments
9	TSS	mg/L	Special Frequency 1*	0	-	-	-	-	50	-	No discharge
	Oil & Grease	mg/L		0	-	-	-	-	10	-	No discharge
	pH	pH		0	-	-	-	-	6.5-8.5	-	No discharge
10	TSS	mg/L	Special Frequency 1*	0	-	-	-	-	50	-	No discharge
	Oil & Grease	mg/L		0	-	-	-	-	10	-	No discharge
	pH	pH		0	-	-	-	-	6.5-8.5	-	No discharge

SUNNYSIDE COAL MINE – MONTHLY MONITORING SUMMARY

Table 3 – Monitoring (Blasts – Limits Apply)

Location	Parameter	Units of Measure	Frequency	No. of Blasts for the Month	Average Value	Max or Only Value	100%ile Limit	(Potential) Non-compliance/breach
R1	Blast Noise	dB (Lin Peak)	Every Blast	0	-	-	-	-
	Blast Vibration	mm/s			-	-	-	-
R2	Blast Noise	dB (Lin Peak)	Every Blast	0	-	-	-	-
	Blast Vibration	mm/s			-	-	-	-
R4	Blast Noise	dB (Lin Peak)	Every Blast	0	-	-	-	-
	Blast Vibration	mm/s			-	-	-	-
R6	Blast Noise	dB (Lin Peak)	Every Blast	0	-	-	-	-
	Blast Vibration	mm/s			-	-	-	-



WHITEHAVEN COAL

SUNNYSIDE COAL MINE – MONTHLY MONITORING SUMMARY

Figure 1 – EPL 12957 Monitoring Locations





SUNNYSIDE COAL MINE – MONTHLY MONITORING SUMMARY

Site Information

EPL No: 12957

EPA Website Link: <http://www.epa.nsw.gov.au/prpoeoapp/ViewPOEOLicence.aspx?DOCID=32488&SYSUID=1&LICID=12957>

Licensee: Namoi Mining Pty Ltd

Licensee Address: Sunnyside Coal Project, 259 Coocooboona Lane, GUNNEDAH NSW 2380

EPL Monitoring Points: See Figure 1 below

Sampling Period: August 2014

Publication Date: 18th September 2014

Table 1 - No Pollutant Limits Apply

EPL ID	Pollutant	Units of Measure	Monitoring Frequency	No. of Samples for the Month	Date(s) Sampled	Date Obtained	Min Value	Mean Value	Median Value	Max or Only Value
1	Particulates-Deposited Matter	g/m ² /month	Continuous	1	14/08/2014	21/08/2014	-	-	-	1.1
2	Particulates-Deposited Matter	g/m ² /month	Continuous	1	14/08/2014	21/08/2014	-	-	-	<0.1
4	Particulates-Deposited Matter	g/m ² /month	Continuous	1	14/08/2014	21/08/2014	-	-	-	0.9
5	Particulates-Deposited Matter	g/m ² /month	Continuous	1	14/08/2014	21/08/2014	-	-	-	0.3
6	Particulates-Deposited Matter	g/m ² /month	Continuous	1	14/08/2014	21/08/2014	-	-	-	<0.1
7	PM ₁₀	µg/m ³	Every 6 days	5	Various	10/09/2014	3.6	7.2	7.4	12.0
9	Conductivity	µS/cm	Special Frequency 1*	0	-	-	-	-	-	-
	Total organic carbon	mg/L		0	-	-	-	-	-	-
10	Conductivity	µS/cm	Special Frequency 1*	0	-	-	-	-	-	-
	Total organic carbon	mg/L		0	-	-	-	-	-	-

SUNNYSIDE COAL MINE – MONTHLY MONITORING SUMMARY

EPL ID	Pollutant	Units of Measure	Monitoring Frequency	No. of Samples for the Month	Date(s) Sampled	Date Obtained	Min Value	Mean Value	Median Value	Max or Only Value
11	TSS	mg/L	Special Frequency 2**	0	-	-	-	-	-	-
	Conductivity	µS/cm		0	-	-	-	-	-	-
	Oil & Grease	mg/L		0	-	-	-	-	-	-
	pH	pH		0	-	-	-	-	-	-
	Total organic carbon	mg/L		0	-	-	-	-	-	-
12	TSS	mg/L	Special Frequency 2**	0	-	-	-	-	-	-
	Conductivity	µS /cm		0	-	-	-	-	-	-
	Oil & Grease	mg/L		0	-	-	-	-	-	-
	pH	pH		0	-	-	-	-	-	-
	Total organic carbon	mg/L		0	-	-	-	-	-	-

* Special Frequency 1 means the collection of samples as soon as practicable after each discharge commences and in any case not more than 12 hours after each discharge commences.

** Special Frequency 2 means collection of samples quarterly (in the event of flow during the quarter) at a time when there is flow and as soon as practicable after each wet weather discharge from points 9 and 10 commences and in any case not more than 12 hours after each discharge commences.

Table 2 - Pollutant Limits Apply

EPL ID	Pollutant	Units of Measure	Monitoring Frequency	No. of Samples for the Month	Date Sampled	Date Obtained	Min Value	Max Value	100%ile Limit	Exceedance (Yes/No)	Comments
9	TSS	mg/L	Special Frequency 1*	0	-	-	-	-	50	-	No discharge
	Oil & Grease	mg/L		0	-	-	-	-	10	-	No discharge
	pH	pH		0	-	-	-	-	6.5-8.5	-	No discharge
10	TSS	mg/L	Special Frequency 1*	0	-	-	-	-	50	-	No discharge
	Oil & Grease	mg/L		0	-	-	-	-	10	-	No discharge
	pH	pH		0	-	-	-	-	6.5-8.5	-	No discharge

SUNNYSIDE COAL MINE – MONTHLY MONITORING SUMMARY

Table 3 – Monitoring (Blasts – Limits Apply)

Location	Parameter	Units of Measure	Frequency	No. of Blasts for the Month	Average Value	Max or Only Value	100%ile Limit	(Potential) Non-compliance/breach
R1	Blast Noise	dB (Lin Peak)	Every Blast	0	-	-	-	-
	Blast Vibration	mm/s			-	-	-	-
R2	Blast Noise	dB (Lin Peak)	Every Blast	0	-	-	-	-
	Blast Vibration	mm/s			-	-	-	-
R4	Blast Noise	dB (Lin Peak)	Every Blast	0	-	-	-	-
	Blast Vibration	mm/s			-	-	-	-
R6	Blast Noise	dB (Lin Peak)	Every Blast	0	-	-	-	-
	Blast Vibration	mm/s			-	-	-	-



WHITEHAVEN COAL

SUNNYSIDE COAL MINE – MONTHLY MONITORING SUMMARY

Figure 1 – EPL 12957 Monitoring Locations





SUNNYSIDE COAL MINE – MONTHLY MONITORING SUMMARY

Site Information

EPL No: 12957

EPA Website Link: <http://www.epa.nsw.gov.au/prpoeoapp/ViewPOEOLicence.aspx?DOCID=32488&SYSUID=1&LICID=12957>

Licensee: Namoi Mining Pty Ltd

Licensee Address: Sunnyside Coal Project, 259 Coocooboona Lane, GUNNEDAH NSW 2380

EPL Monitoring Points: See Figure 1 below

Sampling Period: September 2014

Publication Date: 24th October 2014

Table 1 - No Pollutant Limits Apply

EPL ID	Pollutant	Units of Measure	Monitoring Frequency	No. of Samples for the Month	Date(s) Sampled	Date(s) Obtained	Min Value	Mean Value	Median Value	Max or Only Value
1	Particulates-Deposited Matter	g/m ² /month	Continuous	1	15/09/2014	22/09/2014	-	-	-	1.2
2	Particulates-Deposited Matter	g/m ² /month	Continuous	1	15/09/2014	22/09/2014	-	-	-	4.2
4	Particulates-Deposited Matter	g/m ² /month	Continuous	1	15/09/2014	22/09/2014	-	-	-	1.0
5	Particulates-Deposited Matter	g/m ² /month	Continuous	1	15/09/2014	22/09/2014	-	-	-	<0.1
6	Particulates-Deposited Matter	g/m ² /month	Continuous	1	15/09/2014	22/09/2014	-	-	-	0.7
7	PM ₁₀	µg/m ³	Every 6 days	5	Various	10/10/2014	3.4	6.2	5.7	9.2
9	Conductivity	µS/cm	Special Frequency 1*	0	-	-	-	-	-	-
	Total organic carbon	mg/L					-	-	-	-
10	Conductivity	µS/cm	Special Frequency 1*	0	-	-	-	-	-	-
	Total organic carbon	mg/L					-	-	-	-

SUNNYSIDE COAL MINE – MONTHLY MONITORING SUMMARY

EPL ID	Pollutant	Units of Measure	Monitoring Frequency	No. of Samples for the Month	Date(s) Sampled	Date(s) Obtained	Min Value	Mean Value	Median Value	Max or Only Value
11	TSS	mg/L	Special Frequency 2**	0	-	-	-	-	-	-
	Conductivity	µS/cm		0			-	-	-	-
	Oil & Grease	mg/L		0			-	-	-	-
	pH	pH		0			-	-	-	-
	Total organic carbon	mg/L		0			-	-	-	-
12	TSS	mg/L	Special Frequency 2**	0	-	-	-	-	-	-
	Conductivity	µS /cm		0			-	-	-	-
	Oil & Grease	mg/L		0			-	-	-	-
	pH	pH		0			-	-	-	-
	Total organic carbon	mg/L		0			-	-	-	-

* Special Frequency 1 means the collection of samples as soon as practicable after each discharge commences and in any case not more than 12 hours after each discharge commences.

** Special Frequency 2 means collection of samples quarterly (in the event of flow during the quarter) at a time when there is flow and as soon as practicable after each wet weather discharge from points 9 and 10 commences and in any case not more than 12 hours after each discharge commences.

Table 2 - Pollutant Limits Apply

EPL ID	Pollutant	Units of Measure	Monitoring Frequency	No. of Samples for the Month	Date Sampled	Date Obtained	Min Value	Max Value	100%ile Limit	Exceedance (Yes/No)	Comments
9	TSS	mg/L	Special Frequency 1*	0	-	-	-	-	50	-	No discharge
	Oil & Grease	mg/L		0			-	-	10	-	No discharge
	pH	pH		0			-	-	6.5-8.5	-	No discharge
10	TSS	mg/L	Special Frequency 1*	0	-	-	-	-	50	-	No discharge
	Oil & Grease	mg/L		0			-	-	10	-	No discharge
	pH	pH		0			-	-	6.5-8.5	-	No discharge

SUNNYSIDE COAL MINE – MONTHLY MONITORING SUMMARY

Table 3 – Monitoring (Blasts – Limits Apply)

Location	Parameter	Units of Measure	Frequency	No. of Blasts for the Month	Average Value	Max or Only Value	100%ile Limit	(Potential) Non-compliance/breach
R1	Blast Noise	dB (Lin Peak)	Every Blast	0	-	-	-	-
	Blast Vibration	mm/s			-	-	-	-
R2	Blast Noise	dB (Lin Peak)	Every Blast	0	-	-	-	-
	Blast Vibration	mm/s			-	-	-	-
R4	Blast Noise	dB (Lin Peak)	Every Blast	0	-	-	-	-
	Blast Vibration	mm/s			-	-	-	-
R6	Blast Noise	dB (Lin Peak)	Every Blast	0	-	-	-	-
	Blast Vibration	mm/s			-	-	-	-



WHITEHAVEN COAL

SUNNYSIDE COAL MINE – MONTHLY MONITORING SUMMARY

Figure 1 – EPL 12957 Monitoring Locations





SUNNYSIDE COAL MINE – MONTHLY MONITORING SUMMARY

Site Information

EPL No: 12957

EPA Website Link: <http://www.epa.nsw.gov.au/prpoeoapp/ViewPOEOLicence.aspx?DOCID=32488&SYSUID=1&LICID=12957>

Licensee: Namoi Mining Pty Ltd

Licensee Address: Sunnyside Coal Project, 259 Coocooboona Lane, GUNNEDAH NSW 2380

EPL Monitoring Points: See Figure 1 below

Sampling Period: October 2014

Publication Date: 18th November 2014

Table 1 - No Pollutant Limits Apply

EPL ID	Pollutant	Units of Measure	Monitoring Frequency	No. of Samples for the Month	Date(s) Sampled	Date(s) Obtained	Min Value	Mean Value	Median Value	Max or Only Value
1	Particulates-Deposited Matter	g/m ² /month	Continuous	1	15/10/2014	23/10/2014	-	-	-	0.7
2	Particulates-Deposited Matter	g/m ² /month	Continuous	1	15/10/2014	23/10/2014	-	-	-	0.8
4	Particulates-Deposited Matter	g/m ² /month	Continuous	1	15/10/2014	23/10/2014	-	-	-	0.7
5	Particulates-Deposited Matter	g/m ² /month	Continuous	1	15/10/2014	23/10/2014	-	-	-	2.2
6	Particulates-Deposited Matter	g/m ² /month	Continuous	1	15/10/2014	23/10/2014	-	-	-	1.1
7	PM ₁₀	µg/m ³	Every 6 days	6	Various	12/11/2014	11.7	16.9	14.1	26.5
9	Conductivity	µS/cm	Special Frequency 1*	0	-	-	-	-	-	-
	Total organic carbon	mg/L					-	-	-	-
10	Conductivity	µS/cm	Special Frequency 1*	0	-	-	-	-	-	-
	Total organic carbon	mg/L					-	-	-	-

SUNNYSIDE COAL MINE – MONTHLY MONITORING SUMMARY

EPL ID	Pollutant	Units of Measure	Monitoring Frequency	No. of Samples for the Month	Date(s) Sampled	Date(s) Obtained	Min Value	Mean Value	Median Value	Max or Only Value
11	TSS	mg/L	Special Frequency 2**	0	-	-	-	-	-	-
	Conductivity	µS/cm		0			-	-	-	-
	Oil & Grease	mg/L		0			-	-	-	-
	pH	pH		0			-	-	-	-
	Total organic carbon	mg/L		0			-	-	-	-
12	TSS	mg/L	Special Frequency 2**	0	-	-	-	-	-	-
	Conductivity	µS /cm		0			-	-	-	-
	Oil & Grease	mg/L		0			-	-	-	-
	pH	pH		0			-	-	-	-
	Total organic carbon	mg/L		0			-	-	-	-

* Special Frequency 1 means the collection of samples as soon as practicable after each discharge commences and in any case not more than 12 hours after each discharge commences.

** Special Frequency 2 means collection of samples quarterly (in the event of flow during the quarter) at a time when there is flow and as soon as practicable after each wet weather discharge from points 9 and 10 commences and in any case not more than 12 hours after each discharge commences.

Table 2 - Pollutant Limits Apply

EPL ID	Pollutant	Units of Measure	Monitoring Frequency	No. of Samples for the Month	Date Sampled	Date Obtained	Min Value	Max Value	100%ile Limit	Exceedance (Yes/No)	Comments
9	TSS	mg/L	Special Frequency 1*	0	-	-	-	-	50	-	No discharge
	Oil & Grease	mg/L		0			-	-	10	-	No discharge
	pH	pH		0			-	-	6.5-8.5	-	No discharge
10	TSS	mg/L	Special Frequency 1*	0	-	-	-	-	50	-	No discharge
	Oil & Grease	mg/L		0			-	-	10	-	No discharge
	pH	pH		0			-	-	6.5-8.5	-	No discharge

SUNNYSIDE COAL MINE – MONTHLY MONITORING SUMMARY

Table 3 – Monitoring (Blasts – Limits Apply)

Location	Parameter	Units of Measure	Frequency	No. of Blasts for the Month	Average Value	Max or Only Value	100%ile Limit	(Potential) Non-compliance/breach
R1	Blast Noise	dB (Lin Peak)	Every Blast	0	-	-	-	-
	Blast Vibration	mm/s			-	-	-	-
R2	Blast Noise	dB (Lin Peak)	Every Blast	0	-	-	-	-
	Blast Vibration	mm/s			-	-	-	-
R4	Blast Noise	dB (Lin Peak)	Every Blast	0	-	-	-	-
	Blast Vibration	mm/s			-	-	-	-
R6	Blast Noise	dB (Lin Peak)	Every Blast	0	-	-	-	-
	Blast Vibration	mm/s			-	-	-	-



WHITEHAVEN COAL

SUNNYSIDE COAL MINE – MONTHLY MONITORING SUMMARY

Figure 1 – EPL 12957 Monitoring Locations





SUNNYSIDE COAL MINE – MONTHLY MONITORING SUMMARY

Site Information

EPL No: 12957

EPA Website Link: <http://www.epa.nsw.gov.au/prpoeoapp/ViewPOEOLicence.aspx?DOCID=32488&SYSUID=1&LICID=12957>

Licensee: Namoi Mining Pty Ltd

Licensee Address: Sunnyside Coal Project, 259 Coocooboona Lane, GUNNEDAH NSW 2380

EPL Monitoring Points: See Figure 1 below

Sampling Period: November 2014

Publication Date: 17th December 2014

Table 1 - No Pollutant Limits Apply

EPL ID	Pollutant	Units of Measure	Monitoring Frequency	No. of Samples for the Month	Date(s) Sampled	Date(s) Obtained	Min Value	Mean Value	Median Value	Max or Only Value
1	Particulates-Deposited Matter	g/m ² /month	Continuous	1	14/11/2014	27/11/2014	-	-	-	1.5
2	Particulates-Deposited Matter	g/m ² /month	Continuous	1	14/11/2014	27/11/2014	-	-	-	0.5
4	Particulates-Deposited Matter	g/m ² /month	Continuous	1	14/11/2014	27/11/2014	-	-	-	0.8
5	Particulates-Deposited Matter	g/m ² /month	Continuous	1	14/11/2014	27/11/2014	-	-	-	1.1
6	Particulates-Deposited Matter	g/m ² /month	Continuous	1	14/11/2014	27/11/2014	-	-	-	1.0
7	PM ₁₀	µg/m ³	Every 6 days	5	Various	10/12/2014	8.4	15.7	15.1	25.2
9	Conductivity	µS/cm	Special Frequency 1*	0	-	-	-	-	-	-
	Total organic carbon	mg/L					-	-	-	-
10	Conductivity	µS/cm	Special Frequency 1*	0	-	-	-	-	-	-
	Total organic carbon	mg/L					-	-	-	-

SUNNYSIDE COAL MINE – MONTHLY MONITORING SUMMARY

EPL ID	Pollutant	Units of Measure	Monitoring Frequency	No. of Samples for the Month	Date(s) Sampled	Date(s) Obtained	Min Value	Mean Value	Median Value	Max or Only Value
11	TSS	mg/L	Special Frequency 2**	0	-	-	-	-	-	-
	Conductivity	µS/cm		0			-	-	-	-
	Oil & Grease	mg/L		0			-	-	-	-
	pH	pH		0			-	-	-	-
	Total organic carbon	mg/L		0			-	-	-	-
12	TSS	mg/L	Special Frequency 2**	0	-	-	-	-	-	-
	Conductivity	µS /cm		0			-	-	-	-
	Oil & Grease	mg/L		0			-	-	-	-
	pH	pH		0			-	-	-	-
	Total organic carbon	mg/L		0			-	-	-	-

* Special Frequency 1 means the collection of samples as soon as practicable after each discharge commences and in any case not more than 12 hours after each discharge commences.

** Special Frequency 2 means collection of samples quarterly (in the event of flow during the quarter) at a time when there is flow and as soon as practicable after each wet weather discharge from points 9 and 10 commences and in any case not more than 12 hours after each discharge commences.

Table 2 - Pollutant Limits Apply

EPL ID	Pollutant	Units of Measure	Monitoring Frequency	No. of Samples for the Month	Date Sampled	Date Obtained	Min Value	Max Value	100%ile Limit	Exceedance (Yes/No)	Comments
9	TSS	mg/L	Special Frequency 1*	0	-	-	-	-	50	-	No discharge
	Oil & Grease	mg/L		0			-	-	10	-	No discharge
	pH	pH		0			-	-	6.5-8.5	-	No discharge
10	TSS	mg/L	Special Frequency 1*	0	-	-	-	-	50	-	No discharge
	Oil & Grease	mg/L		0			-	-	10	-	No discharge
	pH	pH		0			-	-	6.5-8.5	-	No discharge

SUNNYSIDE COAL MINE – MONTHLY MONITORING SUMMARY

Table 3 – Monitoring (Blasts – Limits Apply)

Location	Parameter	Units of Measure	Frequency	No. of Blasts for the Month	Average Value	Max or Only Value	100%ile Limit	(Potential) Non-compliance/breach
R1	Blast Noise	dB (Lin Peak)	Every Blast	0	-	-	-	-
	Blast Vibration	mm/s			-	-	-	-
R2	Blast Noise	dB (Lin Peak)	Every Blast	0	-	-	-	-
	Blast Vibration	mm/s			-	-	-	-
R4	Blast Noise	dB (Lin Peak)	Every Blast	0	-	-	-	-
	Blast Vibration	mm/s			-	-	-	-
R6	Blast Noise	dB (Lin Peak)	Every Blast	0	-	-	-	-
	Blast Vibration	mm/s			-	-	-	-



WHITEHAVEN COAL

SUNNYSIDE COAL MINE – MONTHLY MONITORING SUMMARY

Figure 1 – EPL 12957 Monitoring Locations





SUNNYSIDE COAL MINE – MONTHLY MONITORING SUMMARY

Site Information

EPL No: 12957

EPA Website Link: <http://www.epa.nsw.gov.au/prpoeoapp/ViewPOEOLicence.aspx?DOCID=32488&SYSUID=1&LICID=12957>

Licensee: Namoi Mining Pty Ltd

Licensee Address: Sunnyside Coal Project, 259 Coocooboona Lane, GUNNEDAH NSW 2380

EPL Monitoring Points: See Figure 1 below

Sampling Period: December 2014

Publication Date: 20th January 2015

Table 1 - No Pollutant Limits Apply

EPL ID	Pollutant	Units of Measure	Monitoring Frequency	No. of Samples for the Month	Date(s) Sampled	Date(s) Obtained	Min Value	Mean Value	Median Value	Max or Only Value
1	Particulates-Deposited Matter	g/m ² /month	Continuous	1	16/12/2014	24/12/2014	-	-	-	2.9
2	Particulates-Deposited Matter	g/m ² /month	Continuous	1	16/12/2014	24/12/2014	-	-	-	0.8
4	Particulates-Deposited Matter	g/m ² /month	Continuous	1	16/12/2014	24/12/2014	-	-	-	3.3
5	Particulates-Deposited Matter	g/m ² /month	Continuous	1	16/12/2014	24/12/2014	-	-	-	1.8
6	Particulates-Deposited Matter	g/m ² /month	Continuous	1	16/12/2014	24/12/2014	-	-	-	2.8
7	PM ₁₀	µg/m ³	Every 6 days	5	Various	09/01/2015	6.4	14.7	13.2	28.9
9	Conductivity	µS/cm	Special Frequency 1*	0	-	-	-	-	-	-
	Total organic carbon	mg/L					-	-	-	-
10	Conductivity	µS/cm	Special Frequency 1*	0	-	-	-	-	-	-
	Total organic carbon	mg/L					-	-	-	-

SUNNYSIDE COAL MINE – MONTHLY MONITORING SUMMARY

EPL ID	Pollutant	Units of Measure	Monitoring Frequency	No. of Samples for the Month	Date(s) Sampled	Date(s) Obtained	Min Value	Mean Value	Median Value	Max or Only Value
11	TSS	mg/L	Special Frequency 2**	0	-	-	-	-	-	-
	Conductivity	µS/cm		0			-	-	-	-
	Oil & Grease	mg/L		0			-	-	-	-
	pH	pH		0			-	-	-	-
	Total organic carbon	mg/L		0			-	-	-	-
12	TSS	mg/L	Special Frequency 2**	0	-	-	-	-	-	-
	Conductivity	µS /cm		0			-	-	-	-
	Oil & Grease	mg/L		0			-	-	-	-
	pH	pH		0			-	-	-	-
	Total organic carbon	mg/L		0			-	-	-	-

* Special Frequency 1 means the collection of samples as soon as practicable after each discharge commences and in any case not more than 12 hours after each discharge commences.

** Special Frequency 2 means collection of samples quarterly (in the event of flow during the quarter) at a time when there is flow and as soon as practicable after each wet weather discharge from points 9 and 10 commences and in any case not more than 12 hours after each discharge commences.

Table 2 - Pollutant Limits Apply

EPL ID	Pollutant	Units of Measure	Monitoring Frequency	No. of Samples for the Month	Date Sampled	Date Obtained	Min Value	Max Value	100%ile Limit	Exceedance (Yes/No)	Comments
9	TSS	mg/L	Special Frequency 1*	0	-	-	-	-	50	-	No discharge
	Oil & Grease	mg/L		0			-	-	10	-	No discharge
	pH	pH		0			-	-	6.5-8.5	-	No discharge
10	TSS	mg/L	Special Frequency 1*	0	-	-	-	-	50	-	No discharge
	Oil & Grease	mg/L		0			-	-	10	-	No discharge
	pH	pH		0			-	-	6.5-8.5	-	No discharge

SUNNYSIDE COAL MINE – MONTHLY MONITORING SUMMARY

Table 3 – Monitoring (Blasts – Limits Apply)

Location	Parameter	Units of Measure	Frequency	No. of Blasts for the Month	Average Value	Max or Only Value	100%ile Limit	(Potential) Non-compliance/breach
R1	Blast Noise	dB (Lin Peak)	Every Blast	0	-	-	-	-
	Blast Vibration	mm/s			-	-	-	-
R2	Blast Noise	dB (Lin Peak)	Every Blast	0	-	-	-	-
	Blast Vibration	mm/s			-	-	-	-
R4	Blast Noise	dB (Lin Peak)	Every Blast	0	-	-	-	-
	Blast Vibration	mm/s			-	-	-	-
R6	Blast Noise	dB (Lin Peak)	Every Blast	0	-	-	-	-
	Blast Vibration	mm/s			-	-	-	-



WHITEHAVEN COAL

SUNNYSIDE COAL MINE – MONTHLY MONITORING SUMMARY

Figure 1 – EPL 12957 Monitoring Locations

